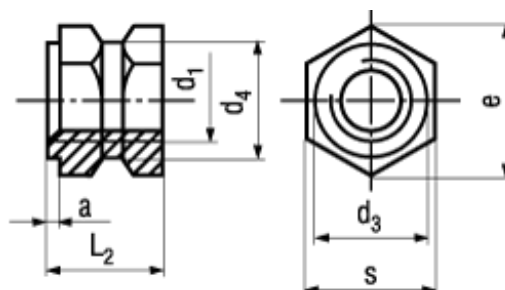


DIN 16903 C

Standard withdrawn



BN 1035

Threaded inserts

type C open, long

Brass

plain

Article#	d ₁	L ₂	e~	s	d ₃	a	d ₄
1385410	M4	6	6,9	6	5,5	1	5
1385429	M5	7,5	8,1	7	7	1	6,4
1385437	M6	9	10,4	9	8	1	7,4
1385445	M8	12	12,7	11	10	1	10,4