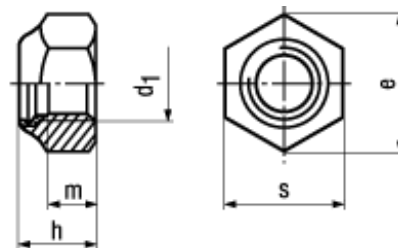




**DIN 985**

Standard withdrawn

**10**



**BN 6866**

**Prevailing torque type hex lock nuts**

thin type, with polyamide insert

Steel 10

zinc plated blue

- ~UNI 7474



**ISO 4042**

Fasteners hardness  $\geq 320$  HV with electroplated coatings:  
Susceptible to hydrogen embrittlement!  
Further notice to residual risks can be found in the introduction section.

M10; M12; M14: wrench size according to ISO on request

Article#	d <sub>1</sub>	e min.	h max.	m	s
1807773	M6	11,06	6	4	10
1807781	M8	14,38	8	5,5	13
1807587	M10	18,9	10	6,5	17
1807803	M12	21,1	12	8	19
1807811	M14	24,49	14	9,5	22
1807838	M16	26,75	16	10,5	24
1807846	M18	29,56	18,5	13	27
1807854	M20	32,95	20	14	30
3120939	M24	39,55	24	15	36
3120942	M30	50,85	30	19	46
3120943	M36	60,79	36	25	55